

Parameters

Electric Parameters:	
Power voltage	DC16~30V
Rated voltage	AC220V 50Hz
Static direct-current power	0.7W
Dynamic direct-current power	1.2W
Working voltage range	AC190~270V
Working current	0.6A
Rated power	140W
Rated torque	10Nm
Rated speed	17r/min
Terminal	HDL Buspro
Db	42dB
Environment Conditions:	
Working temperature	-5°C~45°C
Working relative humidity	<90%
Storage temperature	-20°C~+60°C
Storage relative humidity	<93%
Approved:	
CE	
RoHS	
Production Information:	
Dimension	Φ45×75.5(cm)
Tube diameter	55mm
Maximum load	15kg
Weight	2800g
Housing material	Steel
Installation	Wall hanging
Protection	IP44
Insulation	H

Installation Steps

- The drive adapter installs in the tubular motor.
- Tubular motor installs into the tube.
- The idler installs in the tube.
- And then the tube installs in the motor bracket.
- According to the windows, whether or not you can decide to install the wall brackets.
- If you install the wall brackets, use the tubular motor to install in the wall brackets.

Overviews



HDL-MVSM45B.12 is the tubular motor. It can control the roller shutter by HDL Buspro. It has overheat protection.

Functions

- Tubular motor can control to open, close, stop and percentage.
- Communication: HDL Buspro.
- AC motor is power source, provide enough power, it can make the torque of tubular motor big enough.
- Overheat protection.
- Supports online upgrading.

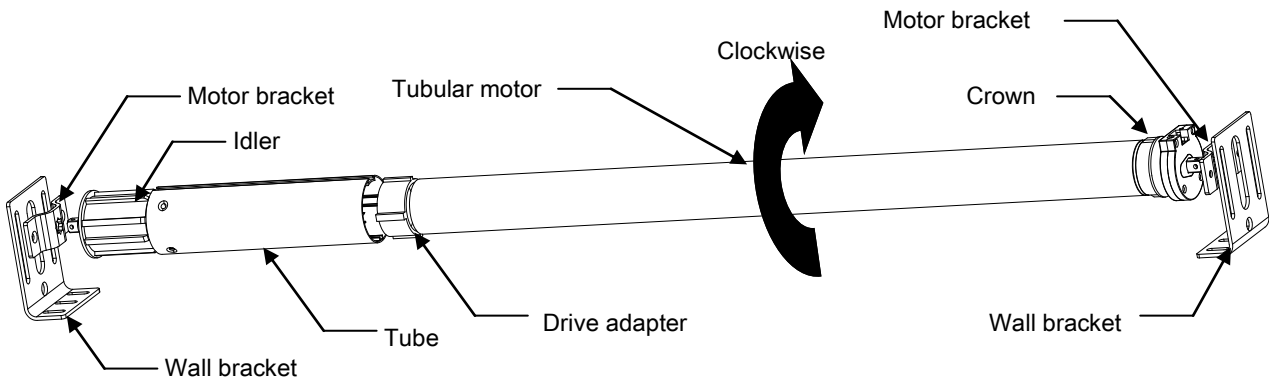
HDL Buspro definition for cable

HDL Buspro	HDL Buspro/KNX
DC24V	Red
COM	Black
DATA-	White
DATA+	Yellow

Important Notes

- Buspro connection - Series connection (Hand-in-hand).
- The motor can tolerate 15KG.
- When you install the motor, you need to test by HDL-BUS Pro Setup tool.
- It has overheat protection. When the motor is overheat, it will stop until the motor temperature is cooling.
- Maximum running time is 4min.
- Maximum height should not exceed 8m
- The tube length should not more than 4m and less than 0.85m.
- The motor has restore function, if the data is wrong, the indicator will turn red, and flash 2 times/2s. Now, you should test by HDL-BUS Pro Setup Tool again.

Dimensions and Wiring

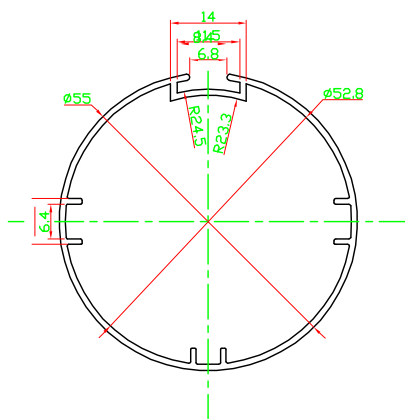


The motor direction of rotation:

(If installation direction is different, the direction of rotation is also different.)

Motor running \ Switch status	Open	Close
Forward (Default)	Anticlockwise	Clockwise
Backward	Clockwise	Anticlockwise

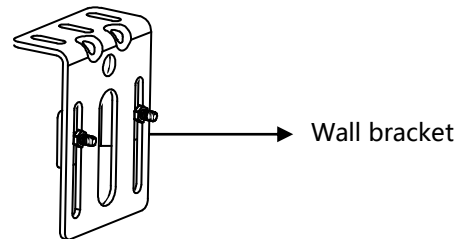
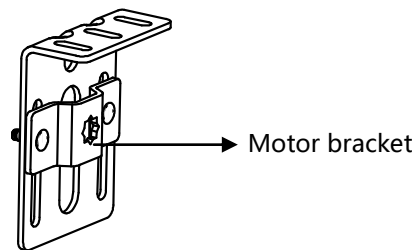
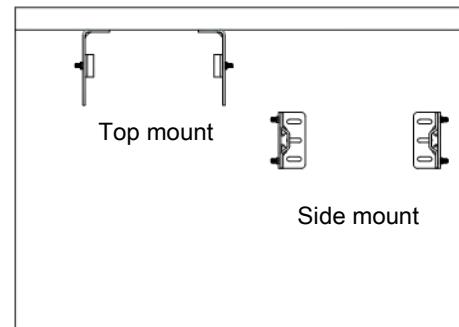
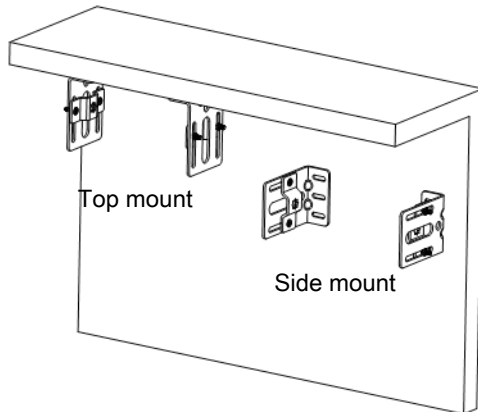
Note: The view direction is right



Tube dimension

Note: The roller shutter should be bought by customer, we won't provide it. Our company can also provide other parts.

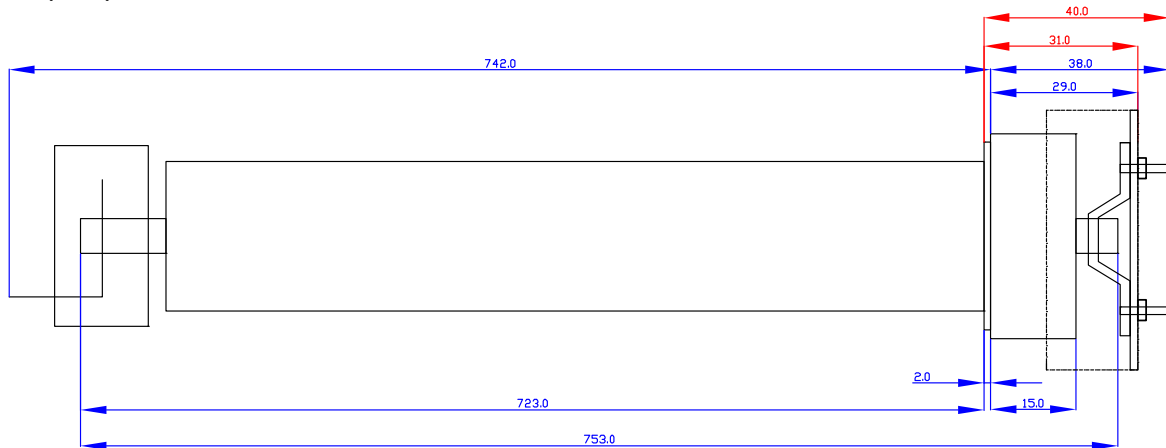
Installation Ways



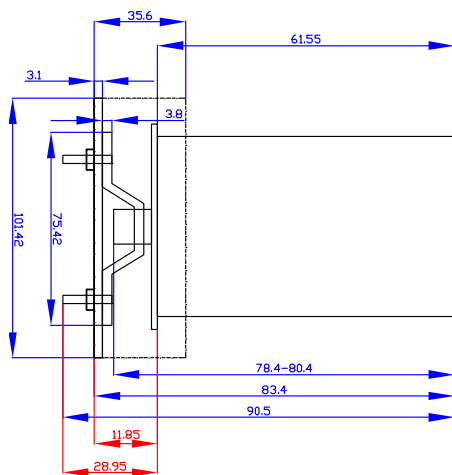
Note: the motor bracket can only install in the left side and right side, but about the wall bracket, you can select the top mount or side mount according to the window.

Dimensions and Wiring (Real dimensions may be different from the picture)

Units:(mm)



Front View



Idler

Note: The tube length should not more than 4m and less than 0.85m

LED indicator

Function	LED status	Enter into the status	Exit the status
Working properly	LED flashes, 1 time/2s	- -	- -
Modify the address of motor	LED flashes	Long press the button for 3s	Long press the button for 3s / no operation for 2minutes
Testing for installation	LED flashes, 1 time/2s	Long press the button for 5s	Long press the button for 5s / no operation for 20minutes

Notes: The above operations are carried out in normal work.

Safety Attention

- Do not make wrong connection on Buspro interface, it will damage the Buspro interface of this module.
- Never let liquids get into the module, it will damage this device.
- Ensure good ventilation
- Avoid contact with liquids and aggressive gases
- When the motor is installed, please do not pull the curtain with too much force, and do not put any additional weight on the rail, do not climb the curtain and do not hang anything on the roller shutter.

Step1 Basic information

frmOneChannelCurtainControler

Basic information | Curtain setting

Choose Device

Device: 6-242-HDL-MWM70B.12 ()

Device configuration

Model: HDL-MWM70B.12

Subnet ID: 6 Device ID: 242

Remark

Remark:

MAC Information

MAC: FF. FF. FF. FF. FF. FF. FF

Modify subnet ID

Subnet ID: DeviceID:

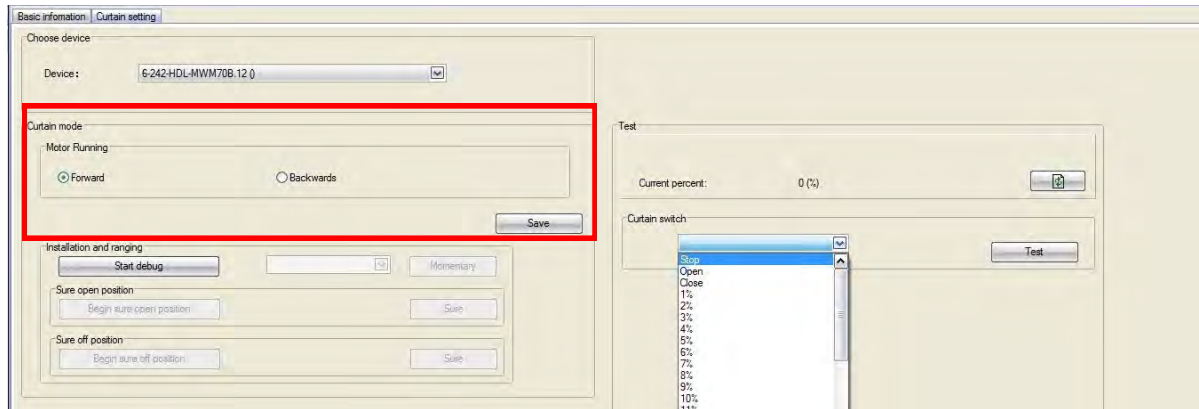
Tubular motor has one subnet ID and one device ID, the device ID should be unique in its subnet and the device ID should be kept consistent with the Gateway. It can modify by HDL-BUS Pro Setup Tool.

Step 2 Installation and ranging

Note: When install the tubular motor, suggest to reserve a part of roller shutter, it is convenience to test and make sure the motor running.

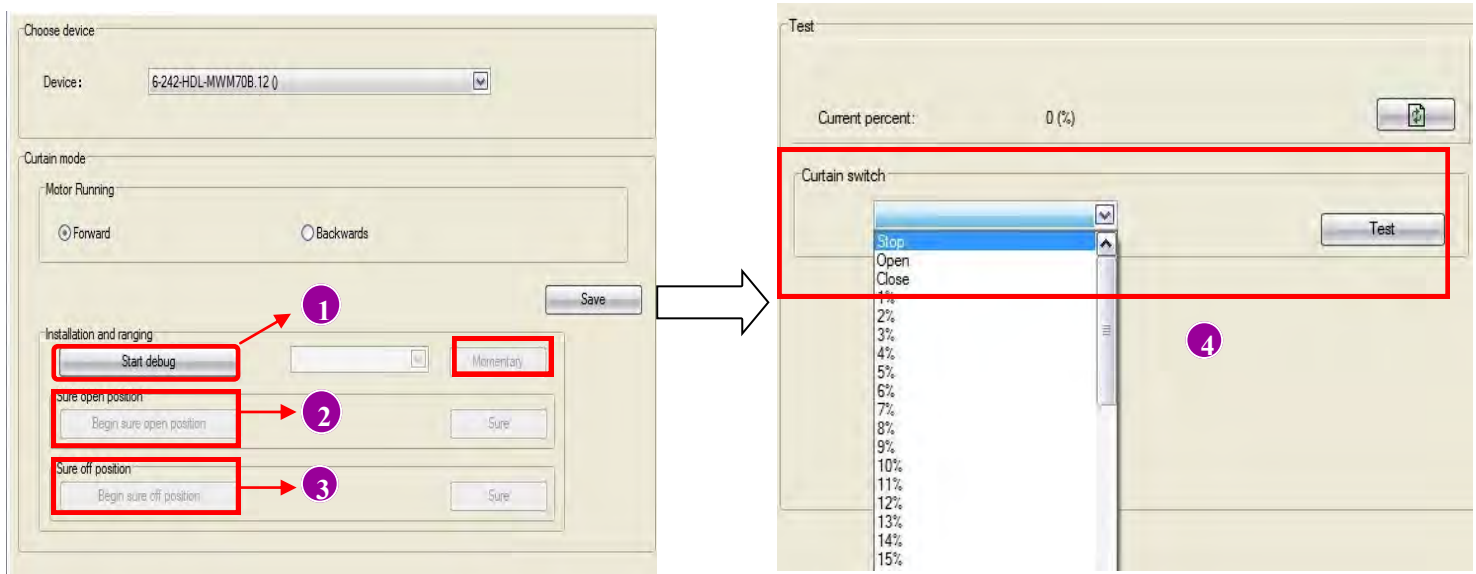
Motor running: Forward (Default) and Backward.

Select the motor running (after selecting, click save)

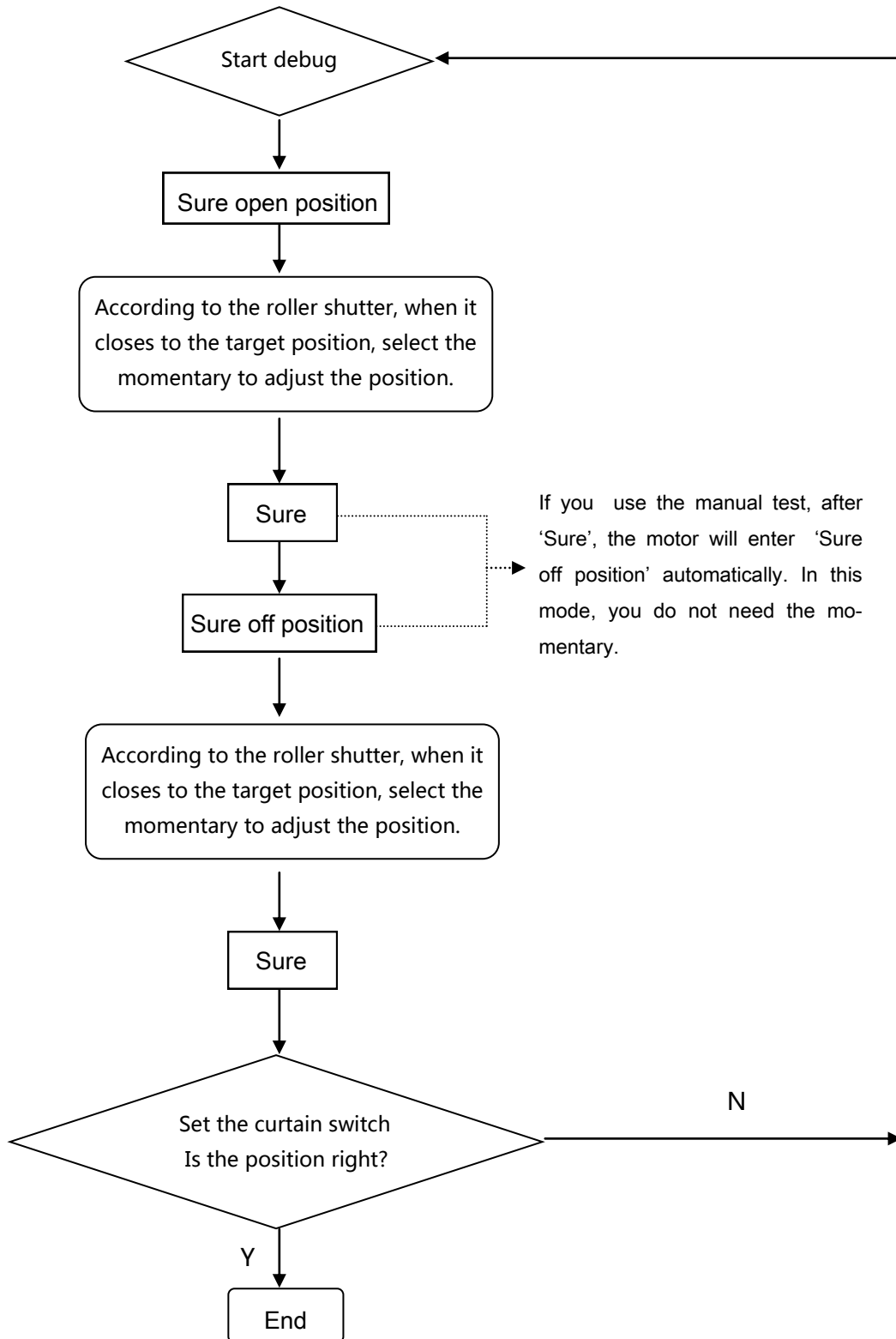


Step 2 Installation and ranging

After selecting, start to installation and ranging.



Step 2 Installation and ranging



Step 3 About DLP panel setting

The panel can control the tubular motor by HDL-BUS Pro Setup Tool.

The tubular motor can work with HDL panel, such as DLP panel. There are 2 ways for control.

Setting 1: The button setting is as follows.

Keep pressing the button, open or close the motor. If loosen the button, the motor will stop. If fully open or close, it will stop automatically.

Short press the button, it will be based on the percent to control the motor

Key no.	Remark	Mode	Function no.	Subnet ID	Device ID	Type	Parameter 1	Parameter 2	Parameter 3
1		Single on/off	1	6	242	Curtain switch	1(Switch NO.)	stop(Switch Status)	N/A

Setting 2: The button setting is as follows.

Short press the button, control the motor open, close or stop.

Key no.	Remark	Mode	Function no.	Subnet ID	Device ID	Type	Parameter 1	Parameter 2	Parameter 3
1		Single on/off	1	6	242	Universal switch	1(Switch no.)	In(Switch Status)	N/A
2		Single on							